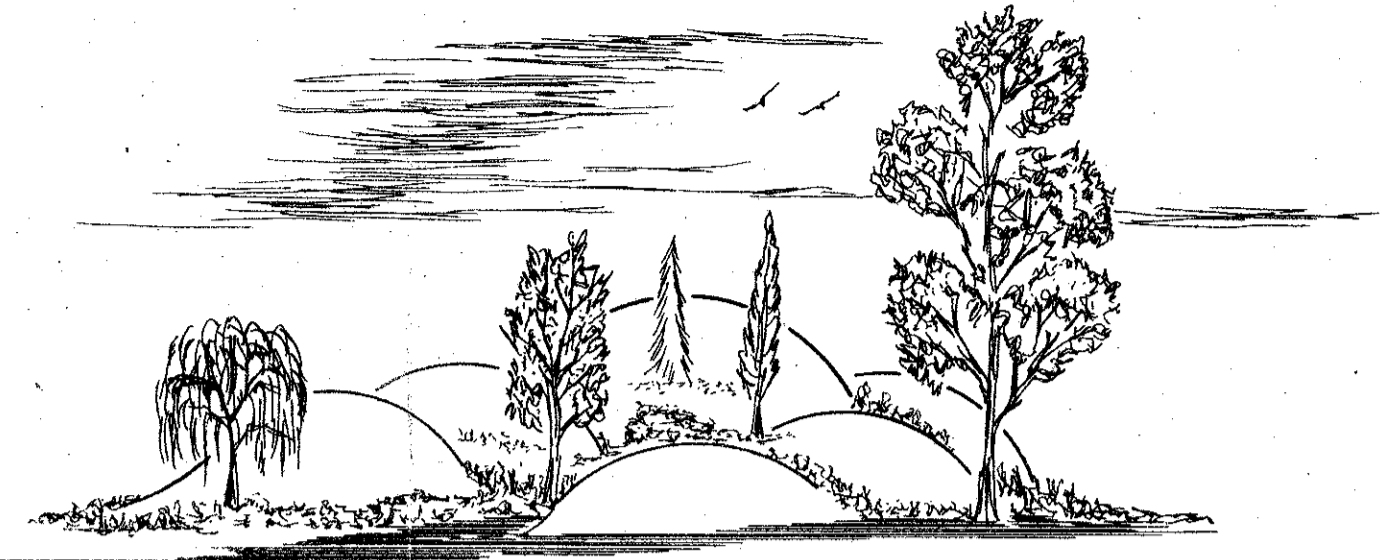
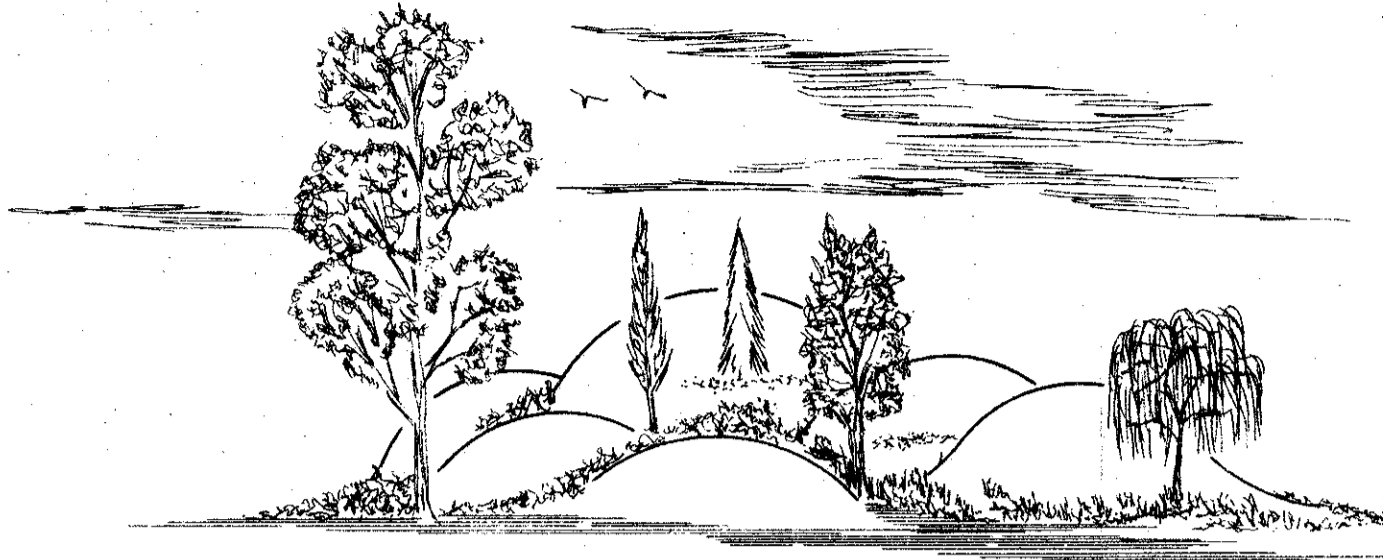


45/128

PART OF A PLANNED UNIT DEVELOPMENT

# GARDEN HILLS UNIT TWO



A SUBDIVISION IN THE NORTH 1/2 OF THE SOUTHEAST 1/4 OF SECTION 11, TOWNSHIP 44 SOUTH, RANGE 42 EAST IN PALM BEACH COUNTY, FLORIDA  
AUGUST 1982

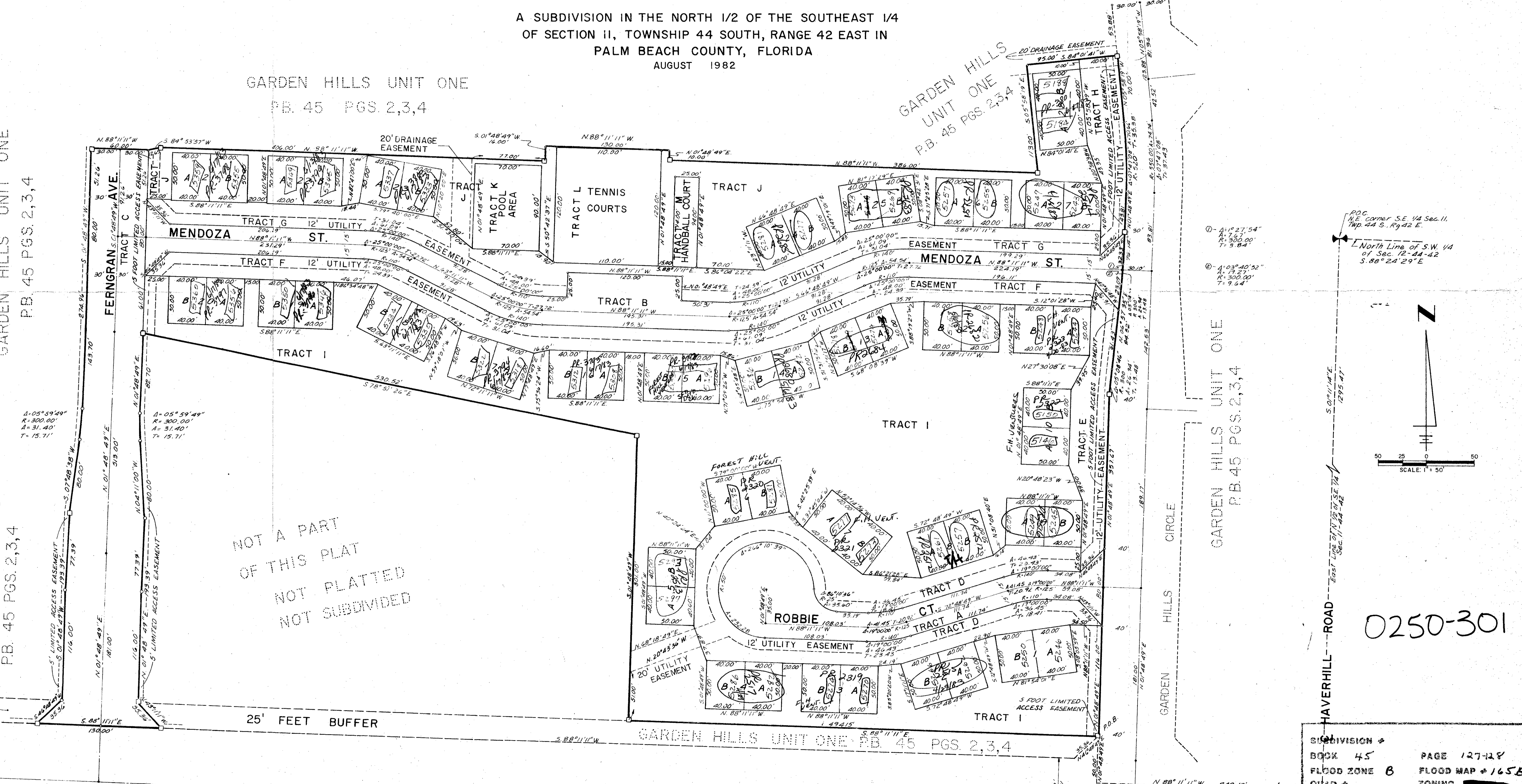
GARDEN HILLS UNIT ONE  
P.B. 45 PGS. 2,3,4

GARDEN HILLS  
UNIT ONE  
P.B. 45 PGS. 2,3,4

GARDEN HILLS UNIT ONE  
P.B. 45 PGS. 2,3,4

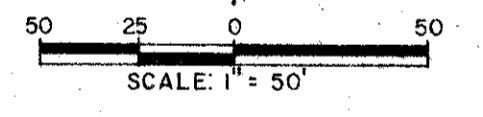
GARDEN HILLS UNIT ONE  
P.B. 45 PGS. 2,3,4

GARDEN HILLS UNIT ONE  
P.B. 45 PGS. 2,3,4



NOT A PART  
OF THIS PLAT  
NOT PLATTED  
NOT SUBDIVIDED

0250-301



SUBDIVISION #	BOOK 45	PAGE 127-128
FLOOD ZONE	B	FLOOD MAP # 165B
QUAD #	SE	ZONING
ZIP CODE	33406	

FSZ 18 - 500  
FZ NO  
RM-SE  
AREAS NOT PLATTED

GARDEN HILLS UNIT II 45/128